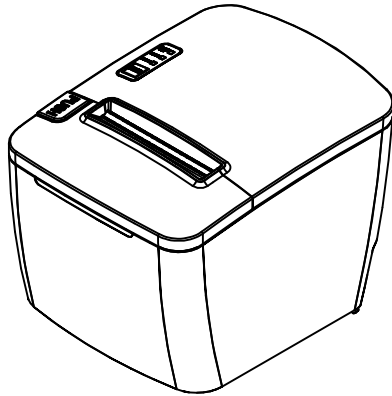


User's Manual



Warning



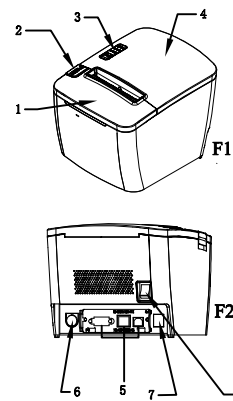
NO touching auto-cutter or manual cutter.
DO NOT touch the print head and its related components in case you may get burns during the process or the printer may be damaged by static electricity.
SHUT DOWN your equipment immediately if it produces smoke, a strange odor or unusual noise.
Continued usage may lead to fire. Immediately unplug the equipment and contact your dealer or a factory service center for advice.
NEVER ATTEMPT to repair this product by yourself. Improper repair work can be dangerous, thus invalidates your guarantee of this equipment at the same time.
BE sure to use the specified power source, connection to an improper power source may destroy your equipment and lead to fire.
DO NOT allow foreign matter to fall into the equipment. Penetration by foreign objects may lead to fire. If water or other liquid spills into this equipment, unplug the power cord immediately, and then contact your dealer. Continued usage may lead to fire.

Attention



DO NOT connect cables in ways other than those mentioned in this manual. Different connections may cause equipment damage and burning.
BE sure to set this equipment on a firm, stable, horizontal surface. The product may break or cause injury if it falls.
DO NOT use in locations subject to high humidity or dust levels. Excessive humidity and dust may cause equipment damage.
DO NOT expose this equipment directly under the sun, or to the blaze or other heat source, which may reduce the effect of printing.
TO ensure safety, unplug this product before leaving it unused for an extended period.

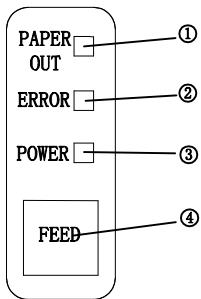
Assemblies



No.	Name
1	Auto-cutter cover
2	Cover open button
3	Control panel
4	Paper cover
5	Data interface
6	Power interface
7	Cash drawer interface
8	Power switch

2

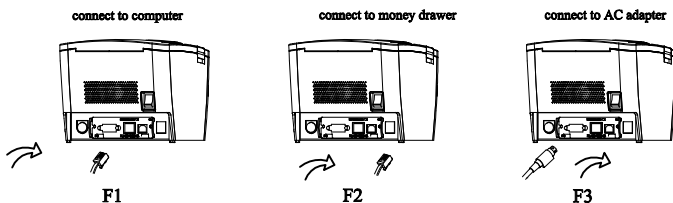
Operation panel



1	Paper out LED	It is on when paper is out.
2	Error LED	It indicates errors. See table for detail (T1)
3	Power LED	Power light is on when the printer is on.
4	FEED button	This button feeds paper or used for self-checking.

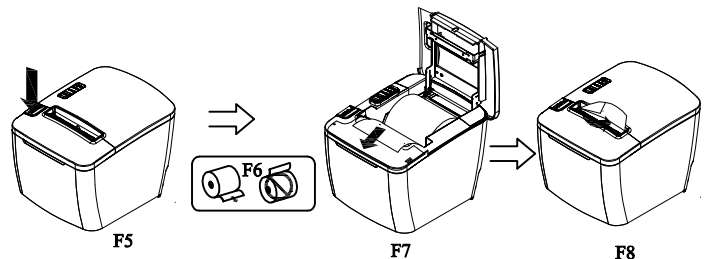
F3

Connection



Please make power socket insert power interface, case drawer socket insert cash drawer interface, choose different interface cable insert corresponding interface and please choose different parameter, according to self-test receipt.

Installing the paper roll



1. Press the button to open the cover. see F5.
2. Remove the paper spool, then remove any used paper roll core. And insert a new roll paper, be aware of the right direction (shown in the F6)
3. Pull out some paper, as shown in the F7, put the spool with roll paper altogether into the paper case, then close the cover.
4. Tear off the paper.

Feed paper

Finger touch Feed button, printer will feed paper, finger leave feed button, stop to feed paper.

Self-Checking

Turn on the power, press FEED button and hold it, the self-test receipt will be printed.

Drive Installation

To use the printer function system driver, please install the driver provided by factory.

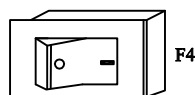
Setting

1. To set up the parameters, please use the set up tools provided by factory.

2. The Ethernet port model printer set up can also visit our website, connect your computer and printer with cable first, then printing a self-test paper to check the IP address of the printer (factory default: 192.168.1.211), access the website on your computer and type the printer IP address into the address bar, enter the setting page to set up the printer.

Switch on/off

Press "o" Switch on power press "o" Switch off power like picture F4.

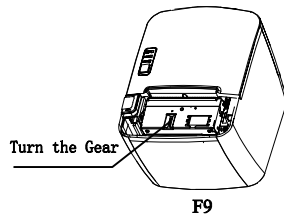
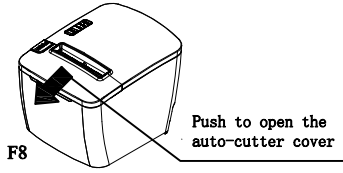


3

4

Handing Method of Auto-cutter Jam

If paper is jam in the auto-cutter, turn off the power switch and reset the printer may bring the cutter blade to the normal position in general. Failing that open the cutter cover and the paper cover, and turn the knob until the blade returns as shown in F8 and F9.

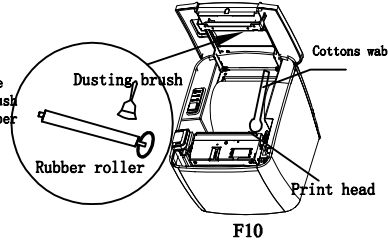


Cleaning and Maintenance

Thermal printing head needs to be maintained regularly. The methods are as below.

1. As shown in Figure 10, use the cotton swab dipped by right amount of alcohol to wipe the printing head heating sheet, in order to remove the accumulated carbon, dust etc use dusting brush to clean the paper scraps and dust on the rubber roller of printing head.

2. Operations to be performed in the printer power off.



T1

Indicator status	Meaning	Description
Error light on.	Printhead lift up. / Temperature error.	Press printhead down gently. / Wait for the temperature decreases.
Error light flashes slowly on 0.5 seconds.	Cutter position error.	Unrecoverable. Paper eject error checking on the cutter.
Error light flashes quickly on 0.4 seconds.	Unrecoverable error.	Repair Processing.

5

Specifications

Printing method	Direct Thermal Printer
Dot density	8(dots)/mm, 576(dots)/(line)
Printing width	72mm
Print speed	about 250mm/s
Character size	(ANK Characters) : 12×24, 1.5 (W) × 3 (H) MM (GB2312 Characters) : 24×24, 3 (W) × 3 (H) MM
Paper roll	φ80mm(Max outside diameter) φ13mm(Mininside diameter) Thickness 0.06~0.08 mm Width 79.5 ± 0.5mm
Interface(compatible)	RS 232C : DB-25 pins(Female) Parallel : DB-25 pins(Male) USB:B modle Ethernet : RJ-45
Money drawer function	DC24V, 1A; Connector:RJ-11,6 lines.
Power supply	DC24V±10%, 2A, Connector: A-1009-3P.
Life	Thermal head :100km ; Autocutter:100,000cuts(less than 30 cuts/m)
Environment	Operating Temperature:5~50°C Operating Humidity:10~80% Storage Temperature:-20~60°C Storage Humidity:10~90%
Support functions	Audible and visual alarm

Printer Packing List

No.	Names and Specifications	Quantity	Description
1	Printer	1	
2	Interface Cable	1	Ethernet models are not equipped.
3	Power Supply	1	
4	Paper	1	
5	User's Manual	1	

6